



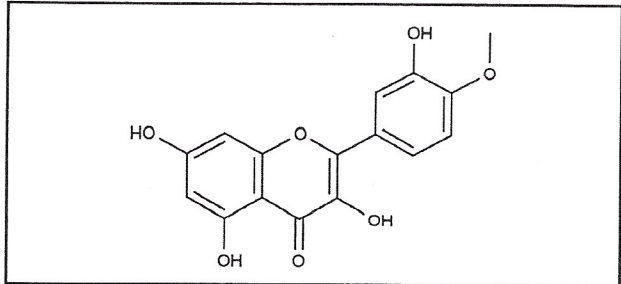
INDOFINE Chemical Company, Inc.

121 Stryker Lane, Bldg. 30
Hillsborough, NJ 08844 USA
Phone: (908) 359-6778; Fax: (908) 359-1179

Certificate Of Analysis

021140S **TAMARIXETIN** **Lot No.: 20030707**

CAS RN	603-61-2
MOL FORMULA	C ₁₆ H ₁₂ O ₇
MOL WEIGHT	316,28



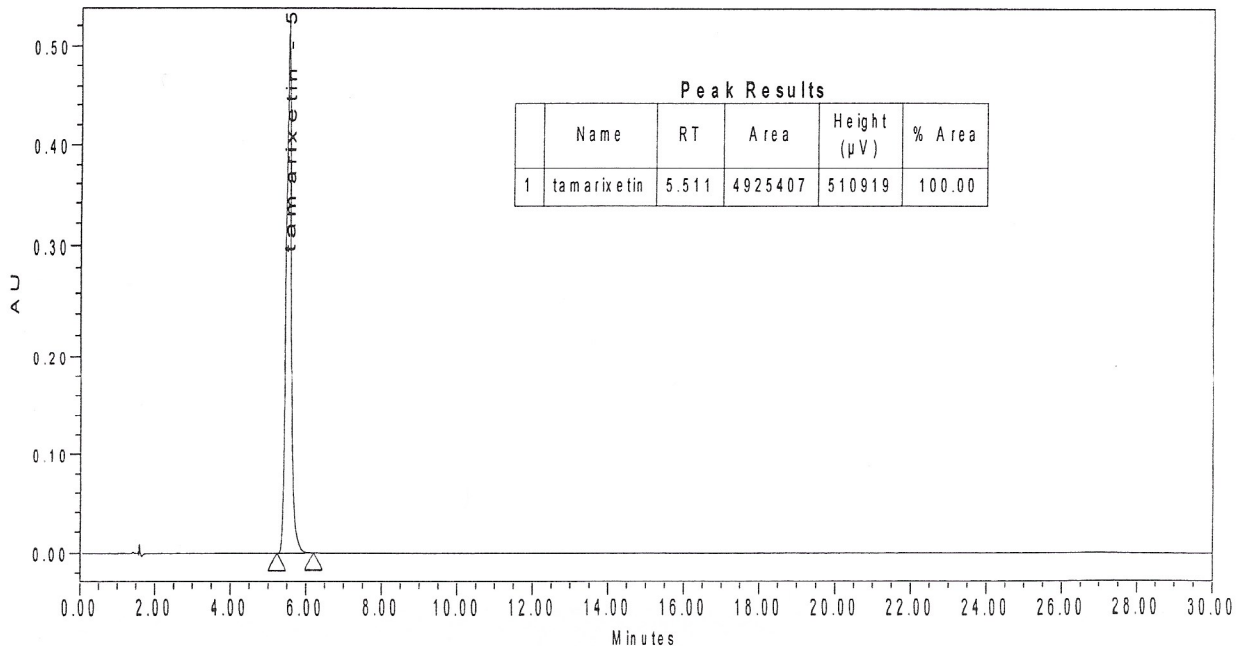
TEST	METHOD	UNIT	SPECIFICATION	RESULT
Appearance	Visual		Yellow powder	Conform
Water content	KF	% w/w		2,7
Residual solvents	GC-HS	% w/w		0,3
Inorganics	ICP-MS	% w/w		< 0,1
Purity	HPLC	% area	≥ 99,0	100
Assay	Calculated (*)	% w/w		97,0

(*) Assay = Purity by HPLC x (100 - %water - %solvents - %inorganics)

CHROMATOGRAPHIC PURITY / HPLC

Column : Symmetry Shield RP18 - 4,6x150 mm - 3,5 μm
Mobile phase : Water + 5% AcOH 30 / MeOH 70 (v/v)
Detection : UV 254 nm

Temperature : 30°C
Flow rate : 1 ml/min
Injection volume : 5 μl
Injection solvent : EtOH



LONG TERM STORAGE : Below 8°C in a dry and dark place

TRANSPORT CONDITIONS : Ambient temperature